



VP Autoparts AB
 Industrivägen 7 Tel: +46-33-206464
 SE-513 32 Fristad E-mail: order@vp-autoparts.se
 SWEDEN

Decals

Observe! The decals are not in their natural sizes.



101



102



103



104



105



106



107



108



109



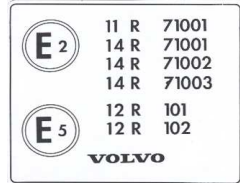
110



111



112



113



114



115



116



117



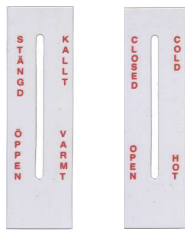
118



119



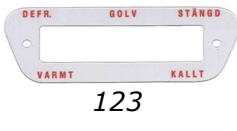
120



121



122



123



124



125



126



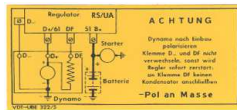
127



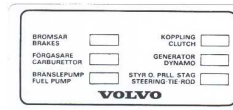
157

OBSERVERA!
Den här vagnen är utrustad med störfrensningssystem av Anti-Lock typ. Vid ett olycksfall bör du alltid hålla vagnen i riktning med motorn. Vagnen kan i så fall glida av domkraften eller bocken och falla ned.
Drag åt handbromsen vid haltpåsar.
OBS! Speciella skatt bestämmelser.
AB Volvo, Göteborg

158



159



160

RECOMMENDED TIRE INFLATION PRESSURES

MODEL	VEHICLE WEIGHT	PLANTED	RECOMM. PRESSURE	RECOMM. TIRE
242-244	920	2 3 5	28 PSI	185 R14
245	1090	2 3 5	30 PSI	185 R14
246	1020	2 3 5	28 PSI	185 R14

SEE OWNER'S MANUAL FOR TIRE INFO

161

MD. BY VOLVO GOTENBURG SWEDEN.
GVWR 4250 LB. GVWR FRONT 2020 LB.
GVWR REAR 2230 LB.
THIS VEHICLE CONFORMS TO ALL APPLICABLE FEDERAL MOTOR VEHICLE SAFETY STANDARDS IN EFFECT ON THE DATE OF MANUFACTURE SHOWN ABOVE.
VEN SEHT NO TYPE PASSENGER CAR

162



163

SHOCK-AI RECOMMENDATIONS
Maximum permitted road speeds:
Driving the fast: Maximum 100 mph (160 km/h)
800 miles (1280 km) 30 mph (48 km/h)
1st gear 30 mph (48 km/h) 30 mph (48 km/h)
2nd gear 30 mph (48 km/h) 40 mph (64 km/h)
3rd gear 30 mph (48 km/h) 40 mph (64 km/h)
4th gear 30 mph (48 km/h) 40 mph (64 km/h)
Avoid driving at low speeds in a high gear.
VOLVO

164



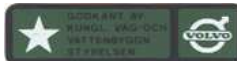
165

MILEAGE WHEN INSTALLED
EQUIPPED WITH
CHAMPION
SPARK PLUGS
PLUG TYPE

166

IMPORTANT
WHEN RESETTING TRIP COUNTERS
ROTATE KNOB CLOCKWISE
UNTIL ALL COUNTERS ARE AT ZERO.

167



168

UPPRYSNINGAR OM AVGASKONTROL
TELEFON: AB VOLVO, GOTENBURG
MOTORBÄRARE: B37E CYLINDERVOLUME: 2664 cm³
TONGÅNGDRIVNING: 1000 x 20 mm
TUNNLEDS RÄVVEFÖR: 200/300 - 0,35 mm (12/11 in)
TÄNKLIG: 10 7/8 x 2 1/2 x 100 - 800 mm
SÄKELÄM: KORTKOPPLAT
VÄNKLIG: NEUTRAL
CO-ROAD: 50 x 1 1/2 in
DETALJ FÖRORDNING ÖVERENSSTÄMMER MED FÖRESKRIFTERNA I DEN SVENSKA BILGÄSKINGSLAGEN FÖR FORDON AV 1976 ELLER SENARE. ÅRS MODEL: VOLVO DET176 1246863

169

VEHICLE EMISSION CONTROL INFORMATION
MANUFACTURER: AB VOLVO, SWEDEN
ENGINE: VOLVO B 20 E
ENGINE SIZE: 151 CU IN
IDLE SPEED: 900 RPM
IGNITION TIMING: 10° BTDC AT 800 RPM
VACUUM: NOT CONNECTED
IDLE CO 2 IS (NOT ADJUSTABLE)
AT TRANSMISSION POSITION: NEUTRAL
THIS VEHICLE CONFORMS TO U.S. DEPT. OF H.E.W. AND CALIFORNIA STATE REGULATIONS APPLICABLE TO 1977 MODEL YEAR NEW MOTOR VEHICLES.
VOLVO

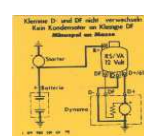
170

0900-0902
15 R 1034-1039
1111-1112
1251-1256
18 R 0002
11 R 75005
14 R 71001-71003
77004-77046
78026
24 R
10 R 01001-01002
12 R 78003-78004
17 R 011-02
VOLVO
TRASSEROLI

171

Jag GÅR hellre än jag kör japanskt

172



173



174



175

Signalhorn
Ströklösa
Baklykta
Stopplys
Lokalykta
Säkerhets
Baklykta
Dinljara
Kärlstare
Bilvårare

176



177



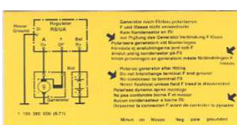
178



179



180



181



186



187



188

NÄSTA
1000 MILS
INSPEKTION
VID
MIL

189



190



667698



191

NÄSTA
1000 MILS
INSPEKTION
VID
MIL

192