

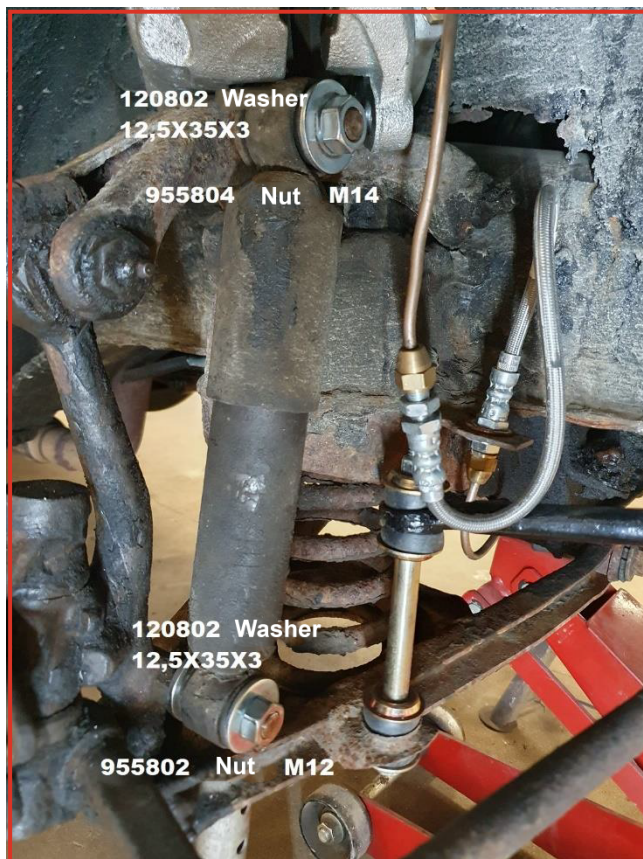
Disc brake conversion kit for Volvo PV 1947-60 & 61-68

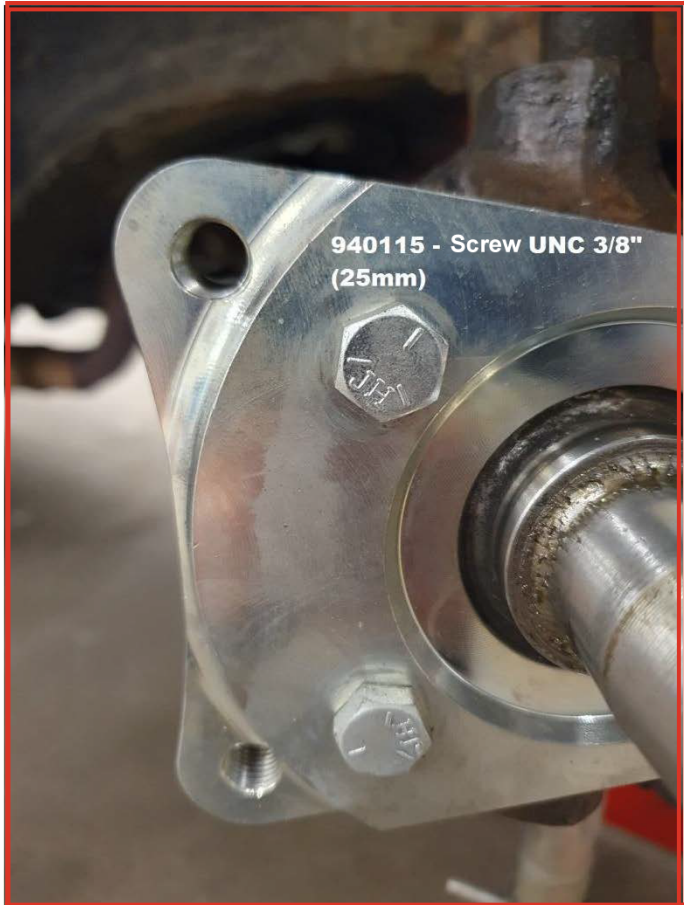
Replacement kit that includes everything you need to upgrade from original front drum brakes to disc brakes on your Volvo PV/Duett.

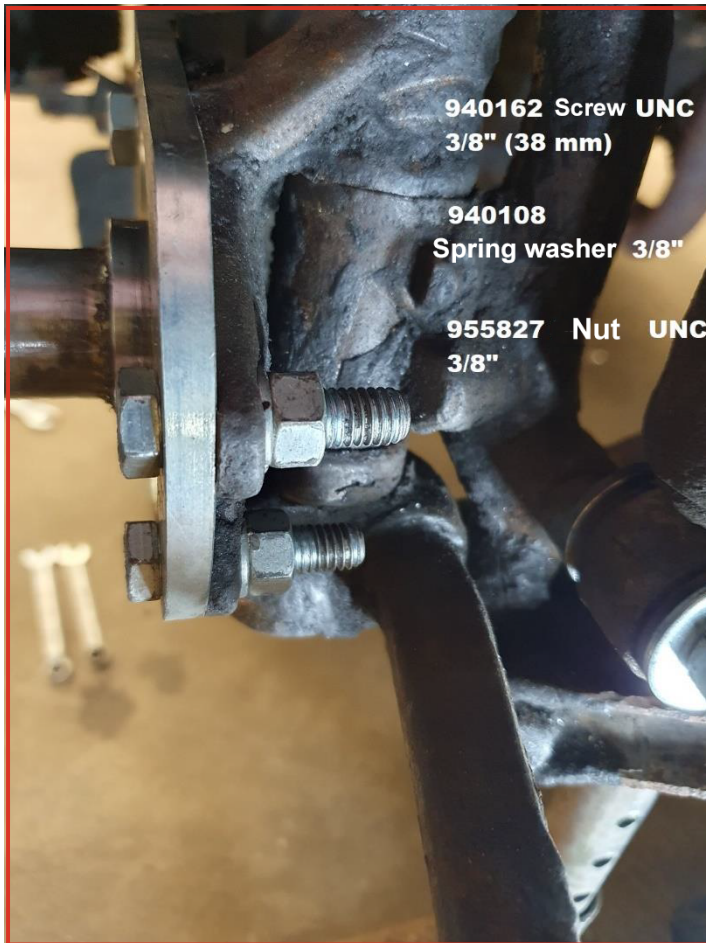
The kit includes:

| | |
|--------------------|---|
| 666525 x2 | Brake disc Volvo 12263-70/1800 63-69 |
| 666526-27 x1 | Brake Caliper brackets PV/210 Pair |
| 273160 x2 | Wheel kit PV/Duett/Amazon/1800 front |
| DBKPV-663468/87694 | Master cylinder Brake PV/Duett |
| 670724N x1 | Caliper Volvo 122/1800 1-circ.LHF NEW |
| 670725N x1 | Caliper Volvo 122/1800 1-circ.RHF NEW |
| 270987A x1 | Brake pads Amazon/1800 1-circuit front |
| 272691 x1 | Mounting kit Brake pads Girling frt 62- |
| 664800-HP x2 | Brake hose 1800 -68 frt, steel braided |
| DBKPV-A x1 | Bracket conversion disc brake PV |
| DBKPV-B x1 | Bearing Bolt Lwr shock absorb PV |
| DBKPV-C x2 | Brake line outer L/R |
| DBKPV-D x1 | Brake line inner |
| 669012 x2 | Lock washer brake caliper B18 |
| 668905 x4 | Screw M12-1,5x35 caliper Gr 8 |
| 940162 x4 | Screw UNC 3/8-16x1 1/2" (38 mm) |
| 940115 x4 | Screw UNC 3/8-16x1" (25 mm) |
| 940108 x12 | Spring washer 3/8" 9,7x16,7x2,2 mm |
| 955827 x12 | Nut UNC 3/8-16 h=8,3 mm |
| 955858 x4 | Nut UNF 3/8-24 h=5,5 mm brake hose |
| 120802 x4 | Washer 12,5X35X3 |
| 955802 x4 | Nut M12-1,25 x 10 |
| 955804 x4 | Nut M14-1,5 x 11 |
| 986503 x4 | Washer M10 10,4x26x2 mm |

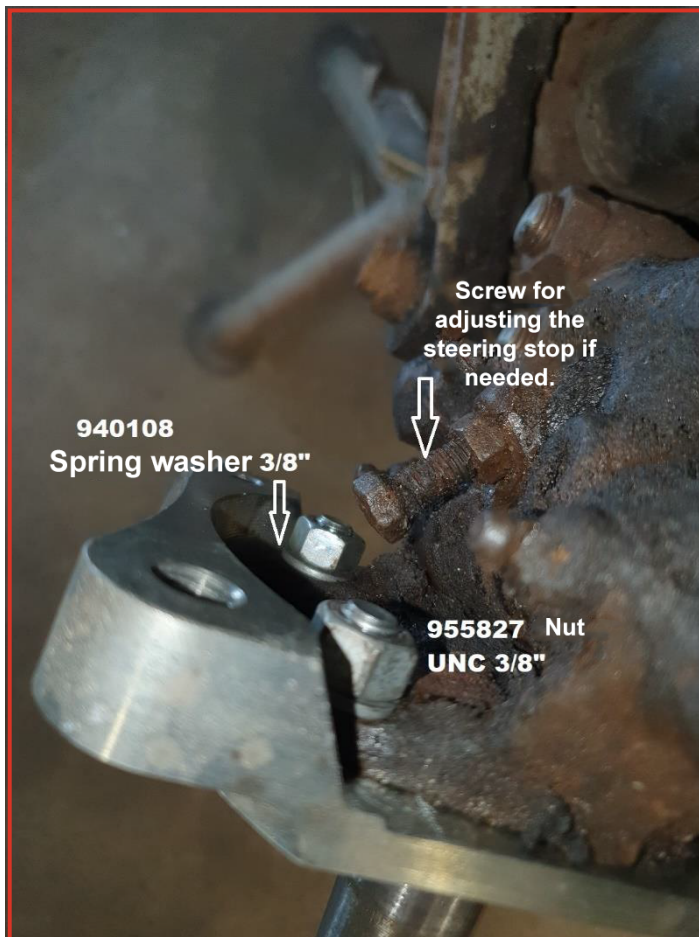
The shock absorber is moved to the front of the control arms to make room for the brake caliper. The new, lower bracket is angled inward and slightly upward, as shown in the image in the description.

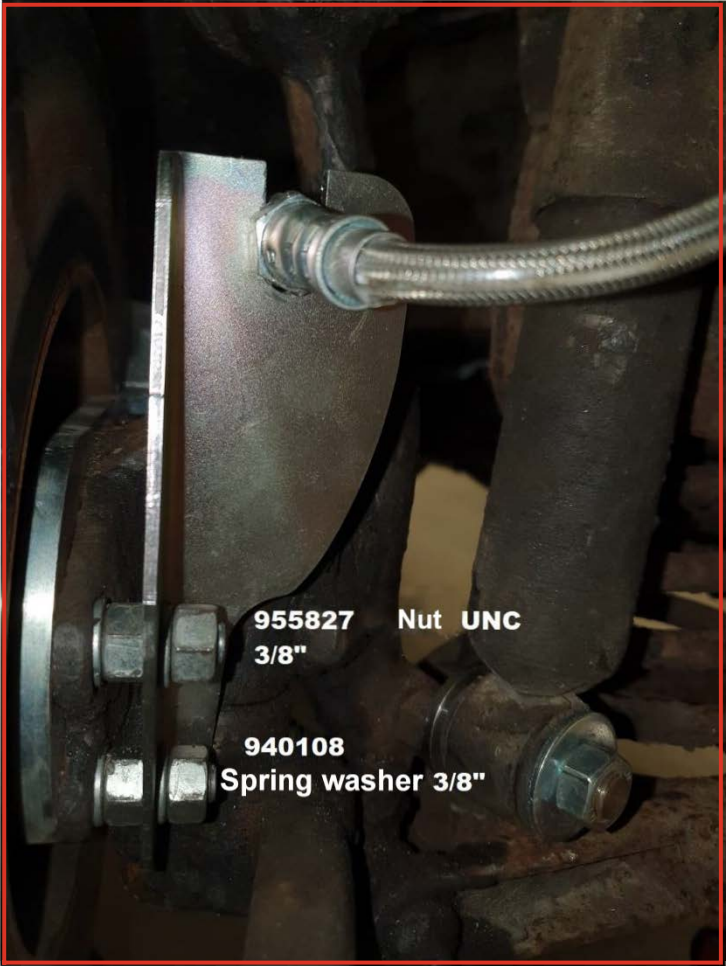






The stop screw in the spindle may need to be adjusted slightly to prevent the brake hose from touching the shock absorber.





The brake hose may need to be rotated slightly to avoid contact with the tire at full steering lock.

